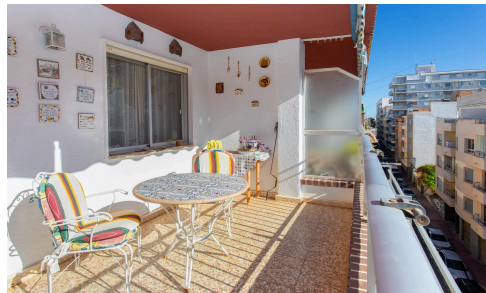


#18115



📍 Playa Del Cura, Torrevieja, Alicante

€197,000

PENTHOUSE LEVEL · SOUTH FACING · 50 M FROM THE SEA Built area of 88 m² with three bedrooms, one full bathroom and one guest toilet. The layout includes an entrance hall, a separate kitchen with an adjoining utility/pantry room, and a living–dining area with direct access to a large south-facing terrace. The terrace includes a private storage room suitable for outdoor items and beach equipment. The apartment is located on the 4th floor of a building with lift access. The setting is street-facing. The building has lift access and is adapted for people with reduced mobility. Parking spaces are available in the building and can be purchased separately, subject to availability. Located 50 m from the sea, the beach promenade and the natural pools of Torrevieja, with restaurants, cafés, supermarkets and a bus stop within walking distance. The renovated harbour area is also reachable on foot. Suitable for year-round living or as an investment property. If you would like to visit the apartment or receive more information, feel free to

Bedrooms

 3

Bathrooms

 2

Covered

 88 m²

