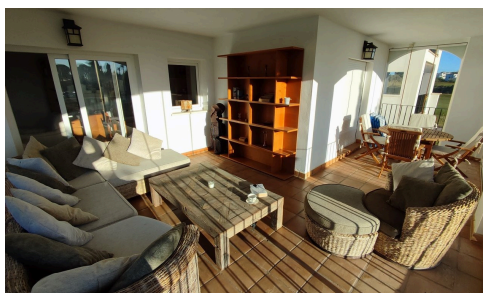


#17348



€164,995

This South East facing corner apartment with a very large L shaped terrace is in an excellent position only a one minute walk from the resorts onsite facilities. Situated on the first floor it benefits from glass curtains on the terrace providing extra light and additional living space. The property has air-conditioning in the living room for summer and central heating for the cooler winter months. The design of the apartment allows it to be made open planned and the option of adding a second bathroom if required. The apartment is being sold furnished minus personal possessions and would make an excellent holiday home or suitable for permanent living. The first thing that impresses you about Hacienda Riquelme Golf Resort is the wide-open spaces, the extensive gardens and the low-density construction, which create a relaxing environment to enjoy a very safe and peaceful life or holiday. The apartments are set out spaciouly around the magnificent and challenging 18 hole golf course part of the Jack Nicklaus Golf Trail. In the heart

Bedrooms

 2

Bathrooms

 1

